

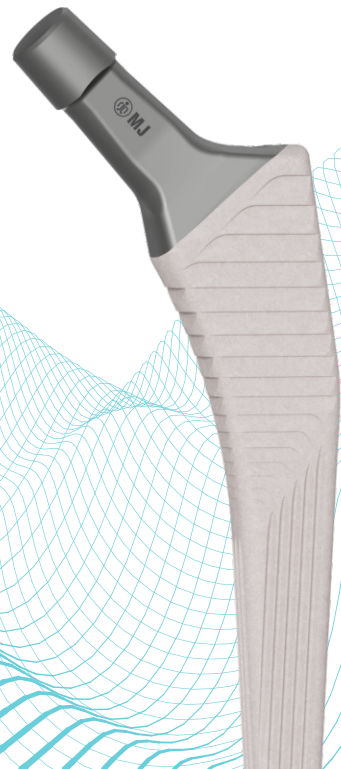


MJ SURGICAL[®]

Implanting Trust

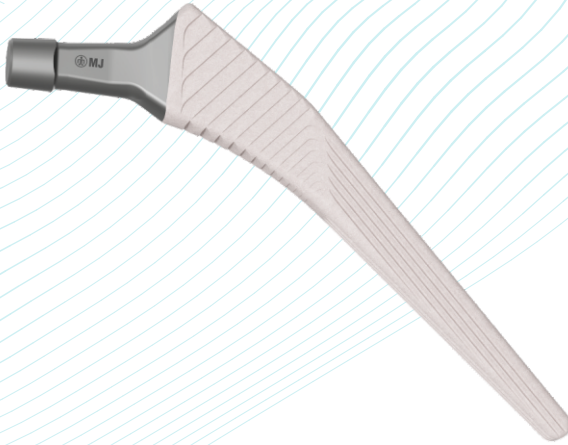


TOTAL HIP REPLACEMENT SYSTEM



www.mjsurgical.com

Uncemented Stem



Stainless Steel	Size	Titanium	Size
AT514.08	08mm	AT504.08	08mm
AT514.09	09mm	AT504.09	09mm
AT514.10	10mm	AT504.10	10mm
AT514.11	11mm	AT504.11	11mm
AT514.12	12mm	AT504.12	12mm
AT514.13	13mm	AT504.13	13mm
AT514.14	14mm	AT504.14	14mm
AT514.15	15mm	AT504.15	15mm

Cemented Stem

Stainless Steel	Size
AT501.S	Small
AT501.M	Medium
AT501.L	Large
AT501.XL	Extra Large



Uncemented Acetabular Cup

Titanium	Size	Titanium	Size
AT506.40	40mm	AT506.52	52mm
AT506.42	42mm	AT506.54	54mm
AT506.44	44mm	AT506.56	56mm
AT506.46	46mm	AT506.58	58mm
AT506.48	48mm	AT506.60	60mm
AT506.50	50mm	AT506.62	62mm

Cemented Acetabular Cup Neutral

	Size	Femoral Head		Size	Femoral Head
AT510.40	40mm	28mm	AT511.44	44mm	32mm
AT510.42	42mm	28mm	AT511.46	46mm	32mm
AT510.44	44mm	28mm	AT511.48	48mm	32mm
AT510.46	46mm	28mm	AT511.50	50mm	32mm
AT510.48	48mm	28mm	AT511.52	52mm	32mm
AT510.50	50mm	28mm	AT511.54	54mm	32mm
AT510.52	52mm	28mm	AT511.56	56mm	32mm
AT510.54	54mm	28mm			
AT510.56	56mm	28mm			

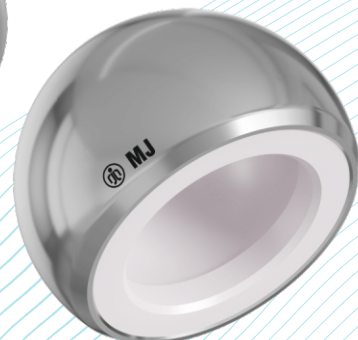


Cemented Acetabular Cup Liped

	Size	Femoral Head		Size	Femoral Head
AT512.40	40mm	28mm	AT513.44	44mm	32mm
AT512.42	42mm	28mm	AT513.46	46mm	32mm
AT512.44	44mm	28mm	AT513.48	48mm	32mm
AT512.46	46mm	28mm	AT513.50	50mm	32mm
AT512.48	48mm	28mm	AT513.52	52mm	32mm
AT512.50	50mm	28mm	AT513.54	54mm	32mm
AT512.52	52mm	28mm	AT513.56	56mm	32mm
AT512.54	54mm	28mm			
AT512.56	56mm	28mm			

Bipolar Cup

	Size		Size
AT502.39	39mm	AT502.47	47mm
AT502.41	41mm	AT502.49	49mm
AT502.43	43mm	AT502.51	51mm
AT502.45	45mm	AT502.53	53mm



Acetabular Liner Neutral



	Size	Femoral Head
AT507.34x22	34mm	22mm
AT507.40x28	40mm	28mm
AT507.44x28	44mm	28mm
AT507.44x32	44mm	32mm
AT507.48x28	48mm	28mm
AT507.48x32	48mm	32mm
AT507.48x36	48mm	36mm
AT507.52x28	52mm	28mm
AT507.52x32	52mm	32mm
AT507.52x36	52mm	36mm

Acetabular Liner Liped

	Size	Femoral Head
AT508.34x22	34mm	22mm
AT508.40x28	40mm	28mm
AT508.44x28	44mm	28mm
AT508.44x32	44mm	32mm
AT508.48x28	48mm	28mm
AT508.48x32	48mm	32mm
AT508.48x36	48mm	36mm
AT508.52x28	52mm	28mm
AT508.52x32	52mm	32mm
AT508.52x36	52mm	36mm



Femoral Head



22 mm

Stainless Steel	Size	CoCr	Size
AT515.0	0	AT516.0	0
AT515.+3.5	+3.5	AT516.+3.5	+3.5
AT515.+5.0	+5.0	AT516.+5.0	+5.0

28 mm

Stainless Steel	Size	CoCr	Size
AT503.-3.5	-3.5	AT505.-3.5	-3.5
AT503.0	0	AT505.0	0
AT503.+3.5	+3.5	AT505.+3.5	+3.5
AT503.+5.0	+5.0	AT505.+5.0	+5.0

32 mm

Stainless Steel	Size	CoCr	Size
AT517.-3.5	-3.5	AT518.-3.5	-3.5
AT517.0	0	AT518.0	0
AT517.+3.5	+3.5	AT518.+3.5	+3.5
AT517.+5.0	+5.0	AT518.+5.0	+5.0

36 mm

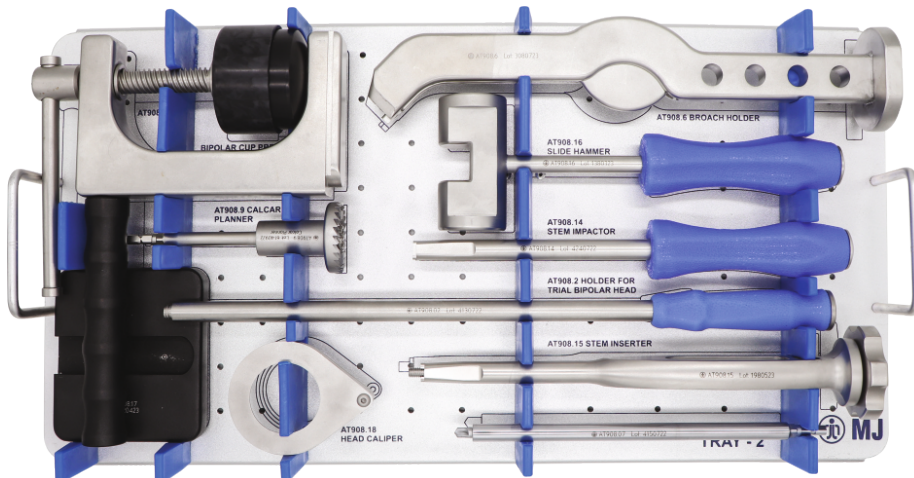
Stainless Steel	Size	CoCr	Size
AT519.-3.5	-3.5	AT520.-3.5	-3.5
AT519.0	0	AT520.0	0
AT519.+3.5	+3.5	AT520.+3.5	+3.5
AT519.+5.0	+5.0	AT520.+5.0	+5.0



6.5mm THR Cancellous Bone Screw

Titanium	Size	Titanium	Size
AT509.15	15 mm	AT509.35	35 mm
AT509.20	20 mm	AT509.40	40 mm
AT509.25	25 mm	AT509.45	45 mm
AT509.30	30 mm	AT509.50	50 mm

Modular Bipolar System



AT908.139	Trial Bipolar Head Ø39mm
AT908.141	Trial Bipolar Head Ø41mm
AT908.143	Trial Bipolar Head Ø43mm
AT908.145	Trial Bipolar Head Ø45mm
AT908.147	Trial Bipolar Head Ø47mm
AT908.149	Trial Bipolar Head Ø49mm
AT908.151	Trial Bipolar Head Ø51mm
AT908.153	Trial Bipolar Head Ø53mm
AT908.2	Holder for Trial Bipolar Head
AT908.3.-3.5	Trial Femoral Head -3.5
AT908.3.0	Trial Femoral Head 0
AT908.3.+3.5	Trial Femoral Head +3.5
AT908.3.+5.0	Trial Femoral Head +5.0
AT908.4	Trial Neck
AT908.6	Broach Holder
AT908.7	Entry Drill
AT908.9	Calcar Planner
AT908.10	T-Handle Quick Coupling
AT908.11	Cork Screw
AT908.12	Hollow Chisel
AT908.13	Head Impactor
AT908.14	Stem Impactor
AT908.15	Stem Inserter
AT908.16	Slide Hammer
AT908.17	Bipolar Cup Press
AT908.18	Head Caliper
AT908.19	Cement Pusher
AT909.1.8	Broach - 8 (UC)
AT909.1.9	Broach - 9 (UC) / Small (C)
AT909.1.10	Broach - 10 (UC) / Medium (C)
AT909.1.11	Broach - 11 (UC)
AT909.1.12	Broach - 12 (UC) / Large (C)
AT909.1.13	Broach - 13 (UC)
AT909.1.14	Broach - 14 (UC) / Extra Large (C)
AT909.1.15	Broach - 15 (UC)
AT909.2.1	Taper Reamer for Broach - 8,9 (UC) / Small (C)
AT909.2.2	Taper Reamer for Broach - 10,11 (UC) / Medium (C)
AT909.2.3	Taper Reamer for Broach - 12,13,14,15 (UC) / Large, Extra Large (C)
AT909.3	Lateral Rasp
AT909.5	Neck Resection Guide

C - Cemented | UC - UnCemented



Phase-1, Plot No. 283, Road No. 3,
GIDC Kathwada, Ahmedabad-382430
Gujarat, India

+91-98795 86742 | 99090 86742 | +91-79-29701970

E-mail - info@mjsurgical.com

Web - www.mjsurgical.com